

Department of Health & Human Services senior management

Structure 1 February 2020

Kym Peake
Secretary

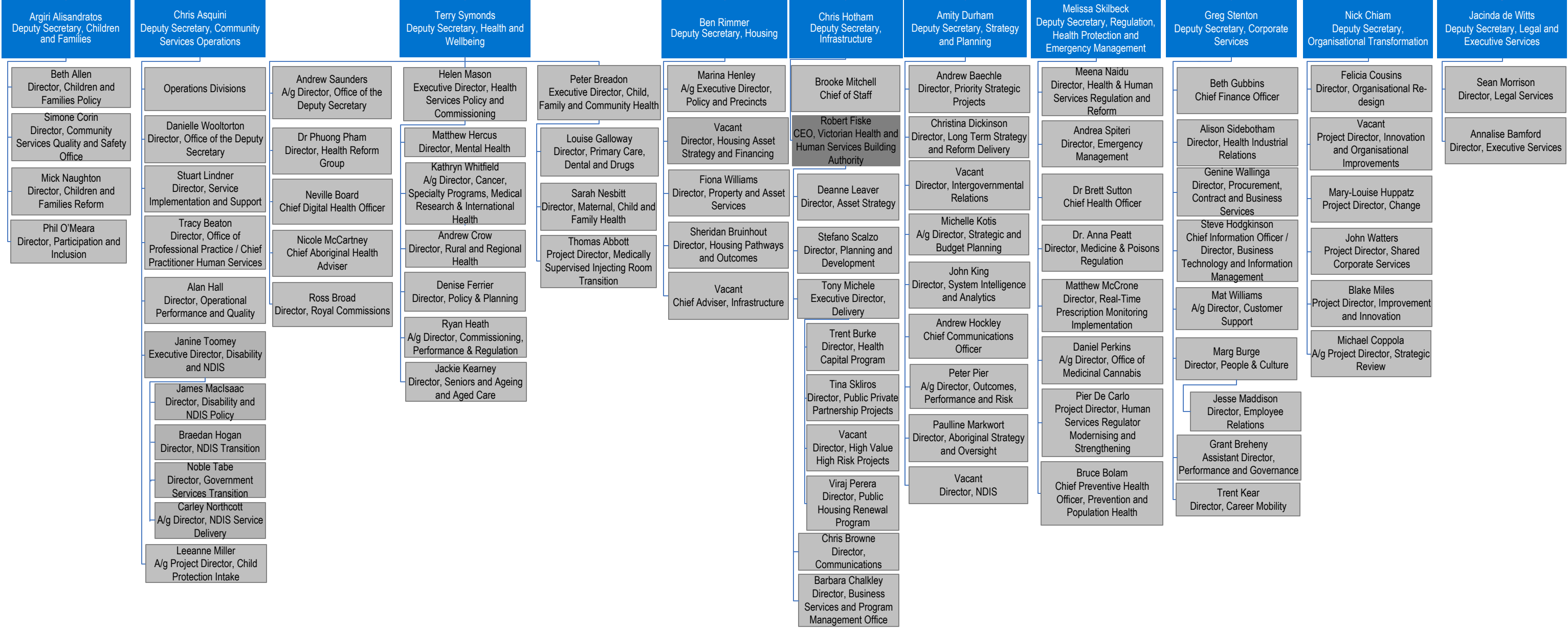
Kym Arthur
Director, Office of the Secretary

Administrative Offices

Annette Lancy
A/g CEO, Family Safety
Victoria
(Administrative Office)

Prof. Euan Wallace
CEO, Safer Care Victoria
(Administrative Office)

Lance Emerson
CEO, Victorian Agency for
Health Information
(Administrative Office)



CHRIS ASQUINI
Deputy Secretary, Community Services
Operations

ANNE CONGLETON
Deputy Secretary, North Division

- DOROTH WEE
Director,
Divisional Child Protection
- JO McINERNEY
A/g Director,
Corporate Services
- JOHN BRIDGFOOT
Area Director,
Mallee
- ANGELA PAPOUTSOLOU
Area Director,
North East Melbourne
- NATHAN CHAPMAN
Area Director,
Loddon
- STEVE BALLARD
Director, Population Health,
Planning and Aboriginal
Engagement
- PENELOPE STEUART
Area Director,
Hume Moreland
- MICHAEL MEFFLIN
Director,
Emergency Management and
Health Protection
- ANNA DONNE
A/g Director,
Disability and NDIS

DANNY O'KELLY
Deputy Secretary, South Division

- MARK MELROSE
A/g Director,
Corporate Services
- LISA GARDNER
Director, Population Health, Planning
and Aboriginal Engagement
- GREG BLAKELEY
Area Director,
Inner Gippsland
- JENNIFER LITSAS
Area Director,
Southern Melbourne
- KATHLEEN ALONSO
Area Director,
Bayside Peninsula
- DENISE HARRISON
Director,
Divisional Child Protection
- GEOFF HOULIHAN
A/g Area Director,
Outer Gippsland
- VACANT
Director,
Emergency Management and Health
Protection
- ANNE KENNEALLY
A/g Director,
Disability and NDIS

JILL GARDINER
Deputy Secretary, East Division

- SHAUNA WALTER
Area Director,
Inner East
- COLLEEN NASH
A/g Director,
Corporate Services
- RICHARD SLADE
Area Director,
Ovens Murray
- PAUL O'KELLY
Area Director,
Goulburn
- SALLY RICHMOND
Area Director,
Outer East
- KEITH SMITH
Director, Population Health, Planning
and Aboriginal Engagement
- MARY REID
Director,
Director, Divisional Child Protection
- SANDY AUSTIN
Director,
Emergency Management and Health
Protection
- CATHIE CEROLINI
A/g Director,
Disability and NDIS

PAUL SMITH
Deputy Secretary, West Division

- CHRISTINE PATTAS
Area Director,
Western Melbourne
- MONICA KELLY
Director,
Population Health, Planning and
Aboriginal Engagement
- COLLEEN WILSON
Area Director,
Central Highlands
- OLIVIA GOODMAN
Director,
Corporate Services
- PAM WILLIAMS
Area Director,
Barwon
- SANDY BRIEN
A/g Director,
Divisional Child Protection
- ADAM REILLY
Area Director,
Wimmera South West
- MARK TRACEY
Area Director,
Brimbank Melton
- KIM O'SHAUGHNESSY
Director,
Emergency Management and Health
Protection
- CHRISTINE OWEN
Director,
Disability and NDIS